



COMPONENT SAMPLE

ARTICLE: 1012200

Low noise pechiny or "rice grain" aluminum floor for trailer



ARTICLE: 1074020

Double deck system with 2650/2700mm inside height



ARTICLE: 1086000

M2 Square meter Fix partition wall 45 mm thickness



ARTICLE: 1105500

2 extra locking bars at the rear doors



ARTICLE: 1304052

2 extra locking bars at the rear doors



ARTICLE: 2061010

Retractable aluminum side guard trailer



ARTICLE: 2062545

3 + 3 LED lucidity rear ligths recessed into the st steel panel



ARTICLE: 2062546

1 Fog- reverse LED lucidity rear ligths recessed into the st steel panel



ARTICLE: 2064020

Lateral spray supression with flaps



ARTICLE: 2071064

Rema conector for taillift



ARTICLE: 2092660

Reverse lamp LED ASPOCK



ARTICLE: 2094000

Ferry rings





COMPONENT SAMPLE

ARTICLE: 2095085

Galvanised BUMPEROLL SOR (2 units) with absorption at the corners at one level



ARTICLE: 2098012

Chassis galvanised



ARTICLE: 2100012

Welded Full-width king pin gooseneck chassis CT45 coupling plate



ARTICLE: 3041400

Galvanised trailer evaporator shield/grille



ARTICLE: 4022060

Automatic isolated sliding bulkhead (bi-temperature)



ARTICLE: 4022601

Automatic isolated sliding bulkhead for small corridor 850mm



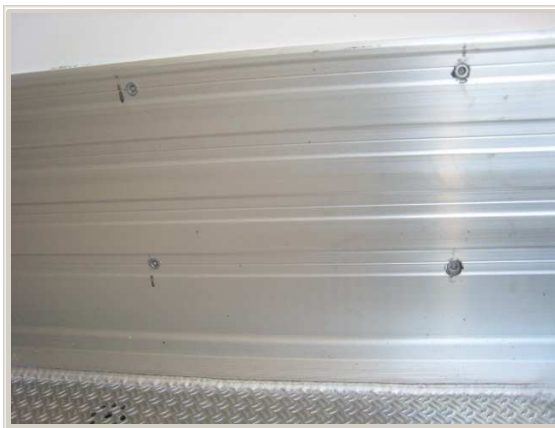
ARTICLE: 4022603

Sliding bulkhead panel with central locking bar



ARTICLE: 4047100

Aluminum kick strip on bottom 250x50 (price per lineal meter)



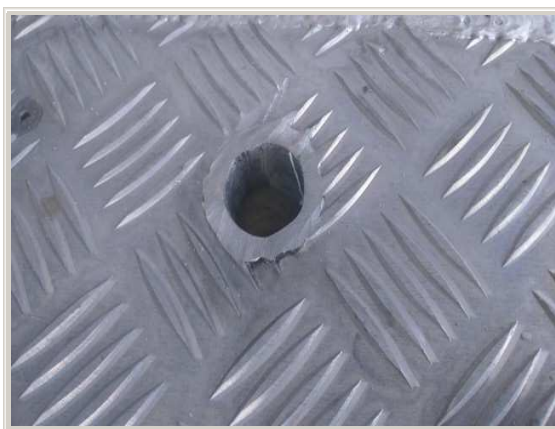
ARTICLE: 4081011

Large rear sliding access ladder with 3 steps and shelf



ARTICLE: 4991004

Water siphon on aluminum plate/floor, welded tube



ARTICLE: 4991600

St steel protection for longitudinal panel corner



ARTICLE: 4992062

St steel prolongation floor profile at rear frame





COMPONENT SAMPLE

ARTICLE: 4993191

Marker top lights ERMAX VALUE FIT flashing + brake + position



ARTICLE: 4993410

Recessed polig plug taillift base mounted inside

